



ST JOSEPH'S EYE HOSPITAL

...seeing is believing

SITUATION AND PROGRESS ANALYSIS ON THE EYE CARE SERVICE IN ST JOSEPH'S EYE HOSPITAL MGBIRICHI OHAJI/EGBEME LGA IMO STATE OF NIGERIA.

There are several causes of blindness, most of which are preventable. In addition to uncorrected refractive error, there are other diseases or group of eye disorders including cataract, glaucoma, diabetic retinopathy, retinitis, hypertensive retinopathy, Uveitis and eye tumors are among others that are common. These have known strategies for their management and elimination and only effective eye hospitals have the solutions or remedies to them. In view of the foregone and in conjunction with WHO's target of global initiative to eliminate avoidable blindness, Vision 2020: "the right to sight", St Joseph's eye hospital Mgbirichi becomes a child of necessity.

The young hospital was actually born on the 14th of February 2008 when the foundation was laid. It was officially opened on the 29th of December 2009, with a free eye care, given to over 350 patients, who were the beneficiaries.

The hospital is owned by the Congregation of the Daughters of Mary, Mother of Mercy (DMMM), Ahiaeke Umuhia, Abia State, Nigeria and in partnership with Christian Blind Mission International (CBMI) Australia, a non-governmental organization. Thanks to (CBM) Australia for their support.

It is located at Mgbirichi in Ohaji /Egbema L.G.A of Imo State. Mgbirichi is about 18km from the capital city of Imo state, Owerri. It is accessed through the OWERRI- PORTHARCOURT highway. Owerri is easily accessed through neighboring cities Umuhia, Okigwe, Aba, Onitsha, Yenogua or Port Harcourt by air; it is accessed via Port Harcourt international airport Omagwa and Nnamdi Azikiwi airport Imo state.

Our Primary objectives are:

- To reach the under privileged with quality and affordable eye care services.
- Maximize vision through our medical and surgical treatments

- Enlightenment program to churches, organizations and tertiary institutes
- Regular community outreach programs around Imo, Abia, Anambara, Bayelsa and River States.
- School vision screening program to primary and secondary schools.

THE NEW LOOK OF ST JOSEPH.



The Front View



The back View

WHAT WE DO

These are achieved via the following services we render:

SURGICALLY

- Phacoemulsification cataract extraction.
- Trabeculectomy (Glaucoma surgery)
- Excision of conjunctival growth with graft
- Corneal/ scleral repairs
- Lid surgeries such as chalazion, entropion repair etc.



- Yag Laser Surgery.
- Evisceration/enucleation when it is unavoidable.
- Probing and syringing of lacrimal drainage system.
- Emergency Surgery.
- Intravitreal injection.
- Squint Correction.
- Ptosis Repair.
- Entropion Repair.

MEDICALLY:

- Management/treatment of all kinds of eye diseases





OPTICALLY:

- Complete optical service
- Low vision service



INVESTIGATIONS



- Central Visual Test (Humphery and Otopox).
- B Scan
- Pachymetry test.

- Retro viral test
- A- Scan
- Fundoscopy test
- Fast Glucose Test.
- Random Glucose test.

COMMUNITY OUTREACH PROGRAMS

○ **MEDICAL COMMUNITY OUTREACH CENTERS**

- St Joseph Annex Akabo in Oguta LGA Imo State
 - Anglican Rehabilitation center (eye clinic unit) Akpodim Mbaise
 - St Mary's Catholic clinic and maternity Ozoro in Delta State
 - Mercy hospital and maternity Mbawsi in Abia State
 - St Joseph Annex Anara, Imo State
 - St Mary Amafieke Orlu eye center, Imo State
 - DMMM Specialist Eye Unit Ahaieke
 - Adazienu
 - Adaziani
 - Nri
 - Oba
 - Abagana
 - Onitsha
 - Nsukka
 - Afikpo
- Eye camp surgery centers are:
- Marist eye clinic Uturu in Abia State
 - Anglican Rehabilitation center (eye clinic unit) Akpodim Mbaise in Imo State
 - Ebem Christian Hospital Ohafia in Abia State
 - Ancilla hospital (eye unit) Ihitte Mbaise in Imo

OUR ACHIEVEMENTS

EQUIPMENTS

In 2010, we started with the following equipments till 2011.

- One manual Optical Edging Machine
- One Slit lamp
- Two refurbished operating Microscope
- One new Operating Microscope
- One Electric Steralizer.
- One Toyota Hylander
- 60 KVA Generators.
- 32 ward beds and Matrasses.
- Washing Machine.

The refurbished operating microscope spoilt and was packed due to unavailability of the parts in Nigeria.

2012:

- ❖ One Toyota Camry
- ❖ Auto Refractor

2013:

- ❖ One A scan
- ❖ One B- Scan
- ❖ One Operating Microscope
- ❖ Central Visual Field test Machine (Optopol).

2014:

- ❖ One Toyota Hilux
- ❖ Automated Optical Edging Machine
- ❖ Fundus Camera Machine.

2015:

- ❖ One B Scan Machine
- ❖ One Central Visual Field test (Humphery)

- ❖ One Slit Lamp Machine.
- ❖ Pachymetry Machine and some Instruments.
- ❖ 3000 Watts Transformer.

2016:

- ❖ One 160 KVA Generator.
- ❖ One ZEISS Operating Microscope.

2017:

- ❖ One Pheco Vitrectomy Machine
- ❖ One Pachymeter
- ❖ Two Tomey puff Tonometer
- ❖ Anesthetic machine

2018:

- ❖ Complete Optical Surfacing Machine.
- ❖ Operating Microscope
- ❖ Slit Lamp
- ❖ Auto Refractor

INFRASTRUCTURES

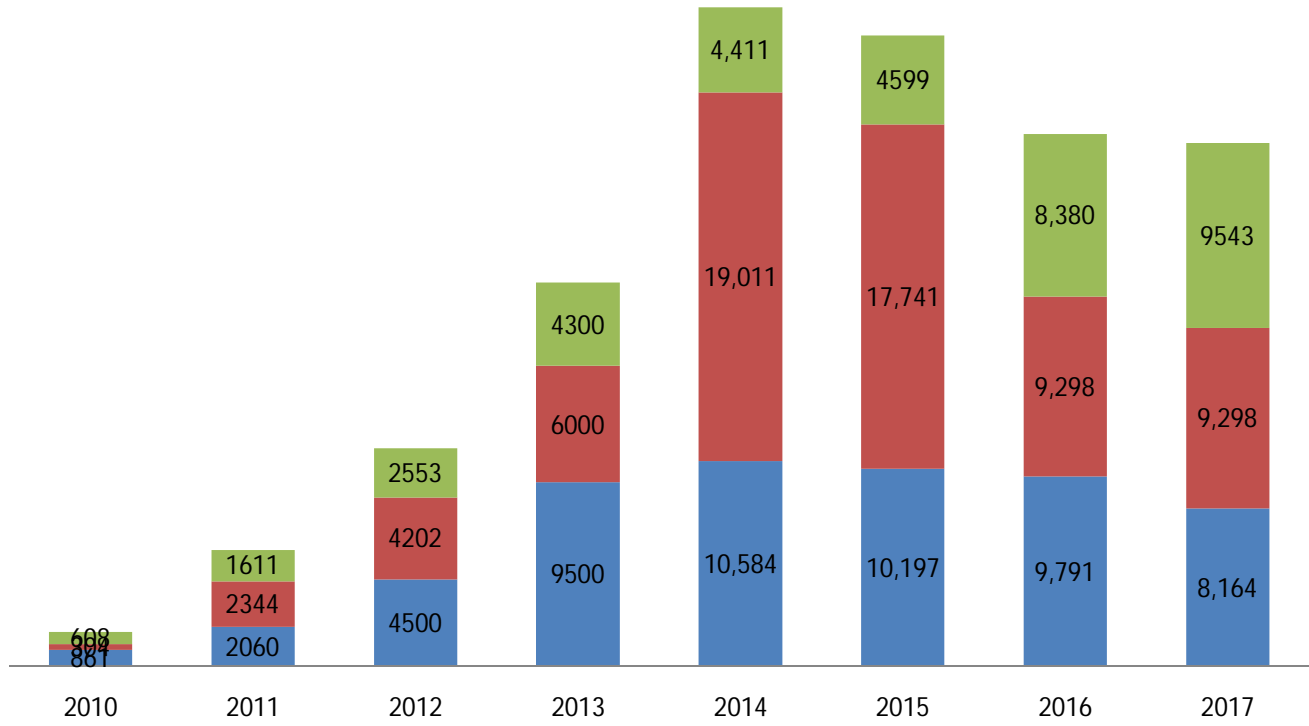
- ❖ Reconstruction of the Hospital gate.
- ❖ Expansion of the OPD building.
- ❖ Construction of Patient's Car park.
- ❖ Construction of Doctors Quarters
- ❖ Construction of Administrative block in progress.
- ❖ Completion of St Joseph's Eye Hospital Galaxy section.

STATISTICS

Statistically, the hospital was in building from the year of 2008 to 2009. In 2010 the actual work began. The first chart showed the number of new cases, follow ups, refractive cases and our outreach clinic while the second chart showed surgery cases. The record for 2016 is from January to June.

Chart 1

■ NEW CASES ■ RETURNED ■ SPECTACLES

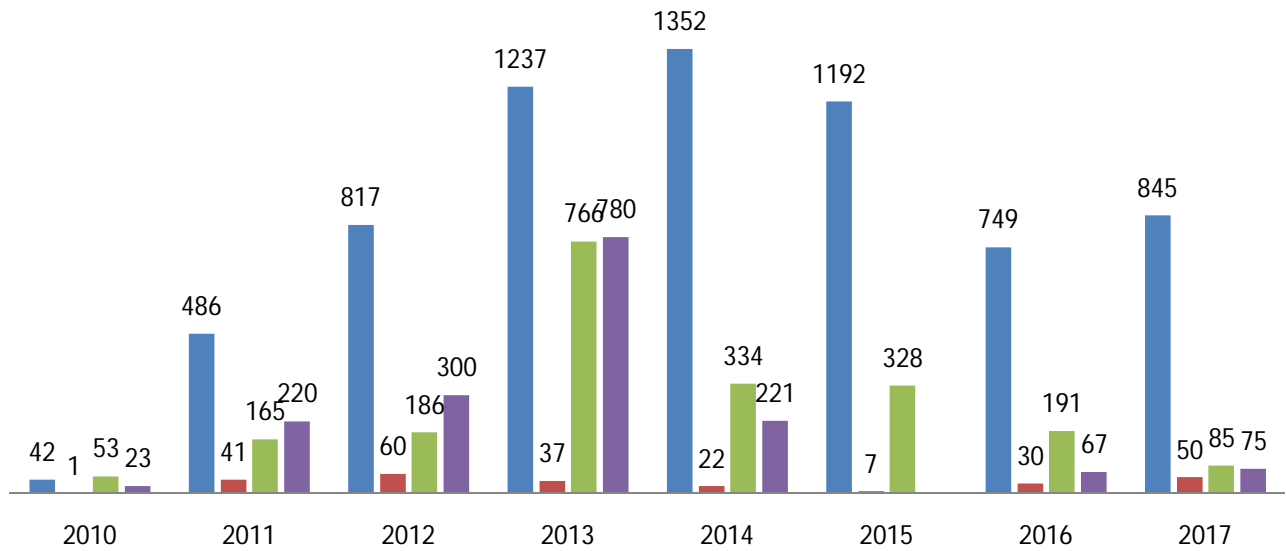


St Joseph's

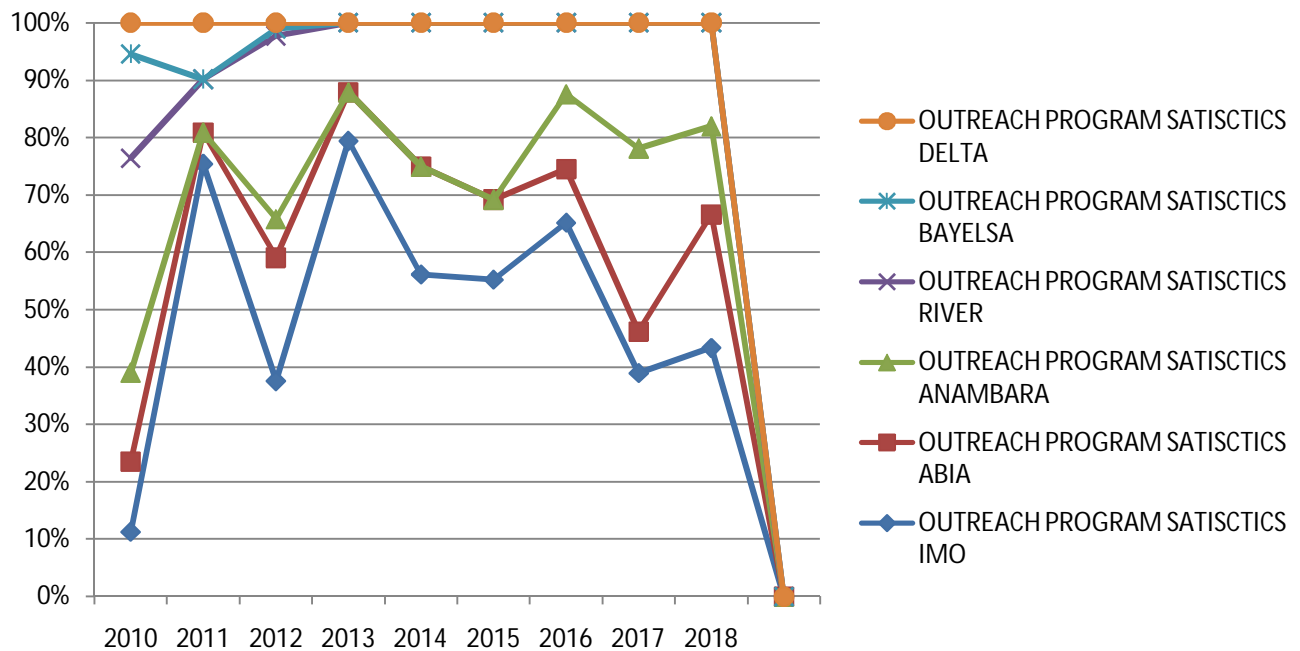
SURGICAL STATISTICS

Chart 2

■ CATARACT ■ GLAUCOMA ■ OTHER SURGERIES ■ OUTREACH SURGERIES



COMMUNITY OUTREACH PROGRAM STATISTICS



HOW IS DONE

Consultations are Mondays through Fridays, from 8am to when the last patient leaves the hospital, it begins with morning devotion. Weekends are strictly emergencies. Outreach program has its own schedules.

Surgery days are on Thursdays which is done by the resident Ophthalmologist (Sr. Dr. Christiana Ubaka) and scheduled surgery days for visiting Ophthalmologist (Dr. Sunday Abuh). Surgical outreach schedules are usually on some weekends

SCHOOL SCREENING PROGRAMS

There are school vision screening programs to various private and public schools.



INAUGURATION OF GLAUCOMA CLUB MEMBERS

One of our greatest achievements was the Inauguration of Glaucoma club which took place on 21st October 2014.

No of glaucoma club members since 2014 till date

2014: 174

2105: 119

2106: 53

2017: 176

2018: 108

Total no of Members= 346 were those who receives glaucoma treatment at a subsidized rate. We are still sourcing for support for the glaucoma club members through St. Joseph's eye Hospital Mgbirichi.

OUR PAST SPECIAL EVENTS

St Joseph's eye hospital piloted the celebration of the following in Imo State:

- ✚ World Glaucoma Week 11th to 17th March 2012. Community free eye screening was conducted in 5 communities in Imo, 2 communities in Abia, and 1 community in River States.
- ✚ World Sight Day 11th October 2012. Free community eye screening was conducted in Mgbirichi Community.
- ✚ World Glaucoma Week 10th to 16th March 2013. Community outreaches was conducted in 6 communities in Imo, 1 community in Abia and 2 communities in River state.
- ✚ World Sight Day 10th October 2013 was conducted at Owerri Municipal through town Rally and community eye screening.
- ✚ World Glaucoma week 6th -12th March 2016. The hospital conducted free community outreach eye screening in 8 communities in Imo State, 4 communities in Abia State, and 3 communities in River and 3 communities in Anambara states.

- ✚ World Glaucoma week 2017. We also conducted free community eye screening in 13 communities in Imo State, 3 communities in River state, 5 communities in Abia State and 5 communities in Anambara State.
- ✚ World Sight Day celebration 2017 was celebrated on 10th October 2017 with free eye screening at Orji community in Imo state.
- ✚ Glaucoma week was celebrated also in 11th – 17th of March 2018. During this week, St Joseph's eye hospital Conducted free community outreach eye screening in 15 communities in Imo State, 3 communities in Abia State and 3 communities in Abia State. We also conducted free community eye screening program during the world sight day celebration in 9 communities in Imo State.

Our watch word- "DO WHAT YOU CAN, WITH WHAT YOU HAVE, WHERE YOU ARE" – Theodore Roosevelt

We have other challenges and difficulties that are limiting us to carry out our mission efficiently. They are:

- Lack of mobility in carry out our outreach and school screening programs
- Seeking for support from organizations for the glaucoma club members.
- Poor electricity supply
- Insufficient availability of working materials/equipments
- Equipping our outreach centers
- More than 70% of patients are less privileged

FUTURE NEEDS

Base on the following category:

Infrastructure:

- Construction of Hospital road
- Completion of Administrative Block
- Building of a block that will contain a standard canteen, laundry and Bio-medical office.
- Development of Staff quarters
- Expansion of OPD

Equipments.

- To procure Diode laser Machine.
- Procurement of CataRhex 3 (Circle).
- Procurement of Vitrectomy Machine.
- Procurement of complete Optical Equipments.

Services:

- To improve in our retinal evaluation/treatment.
- To improve in pediatric assessment/treatment ((Including surgeries)
- To convert from small incision cataract surgery to phacoemucification surgery outcome.

In conclusion, the hospital has come to stay, to serve humanity and as such need more supporters to achieve this goal.

There is need for more support in outreach programs both community base outreaches and school screening programs. Support

CONTACTS:

Website: stjosepheye.com

E-mail: contactus@stjosepheye.com

E-mail: christiana.ubaka@doctor.com

E-mail: stjoeye@yahoo.com.

Visit:

www.stjosepheye.com

[Facebook: \[stjoeye@yahoo.com\]\(https://www.facebook.com/stjoeye@yahoo.com\)](https://www.facebook.com/stjoeye@yahoo.com)

www.stjosephglaucomaclub.com